

# Spider, Ghost and Bats Small Signs

©2020 Laurie Speltz



# Spider, Ghost and Bats Small Signs

©2020 Laurie Speltz

This is a FREE pattern offered in my Facebook "LIVE in Laurie's Studio". It may not be resold. You may handpaint items to sell at craft shows or online. You may not reproduce designs in any other manor for profit. If you have questions, contact me directly at [info@lauriespeltz.com](mailto:info@lauriespeltz.com)

## Supplies

Assorted Ornament Shapes (Available from Pinecraft Inc. [www.pinecraftinc.com](http://www.pinecraftinc.com) 503-653-8266)

Stencils (optional) available from The Creative Coach [www.lauriespeltz.com](http://www.lauriespeltz.com)

Ghosts, Bats and Faces Basecoat Stencil (Item# BCS112)

Permanent Ink Pen

DecoArt Acrylic Matte Finish

Palette-DecoArt Americana

Lamp Black, Santa Red, Soft Black, Lavender, Dioxazine Purple, Wild Berry, Antique Maroon, Snow White, Deep Midnight Blue, Canyon Orange, Foliage Green, Marigold, Slate Grey, Indian Turquoise Blue, Turquoise Blue, Watermelon Slice, Avocado

Brushes - Black Gold by Dynasty

Series# 206S Shader: 2,6,10

Series# 206A Angular Shader: 1/2"

Series# 206MSC Mini Script Liner: 20/0

Stencil Brushes or Dry Brushes

Series# 206FW Flat Glaze: 3/4"

Series# 206L Liner: 1, 2

Series# 206R Round: 2, 4

## Painting Instruction

Spider - Base the ornament shape of choice with Lamp Black. The spider is based with Lavender and shaded with Dioxazine Purple and again with Deep Midnight Blue. Add the dark dots and lines with Dioxazine Purple. The green dots and lines are Foliage Green. Dry brush the cheeks with Wild Berry. Add the nose with Wild Berry and shade with Antique Maroon, Highlight with Snow White. The eyes are Snow White. Add eyelids Foliage Green and shade with Avocado. Add the eyelash line with Dioxazine Purple. The eyes are Lamp Black and highlighted with Snow White. The dot is also Snow White. Add the background dots with Snow White and the stars with Marigold.

Ghost - Base the surface with Lamp Black. Dry brush the background with Canyon Orange. The ghost is based with Snow White and shaded with Slate Grey. The cheeks are dry brushed with Canyon Orange. Add the eyes and mouth with ink or with Lamp Black. The eyeballs are based with Lamp Black. Highlight with Snow White and add highlight dots with Snow White. The tie is based with Canyon Orange and shaded with Antique Maroon. Add dots with Snow White and Antique Maroon. The patch is based with Indian Turquoise and shaded with Turquoise Blue. The bats are added with Lamp Black and highlighted with Slate Grey. Add eyes with dots of Snow White and Lamp Black. The stars in the background are Marigold and the dots are Snow White.

Bats - Base the surface with Santa Red. Topcoat with Lamp Black. Sand off the color as desired. Add additional red by reapplying paint in a dry brushed manor. The bats are based with Lamp Black and highlight with Snow White. Add the green details with Foliage Green and the purple details with

## Spider, Ghost and Bats Small Signs

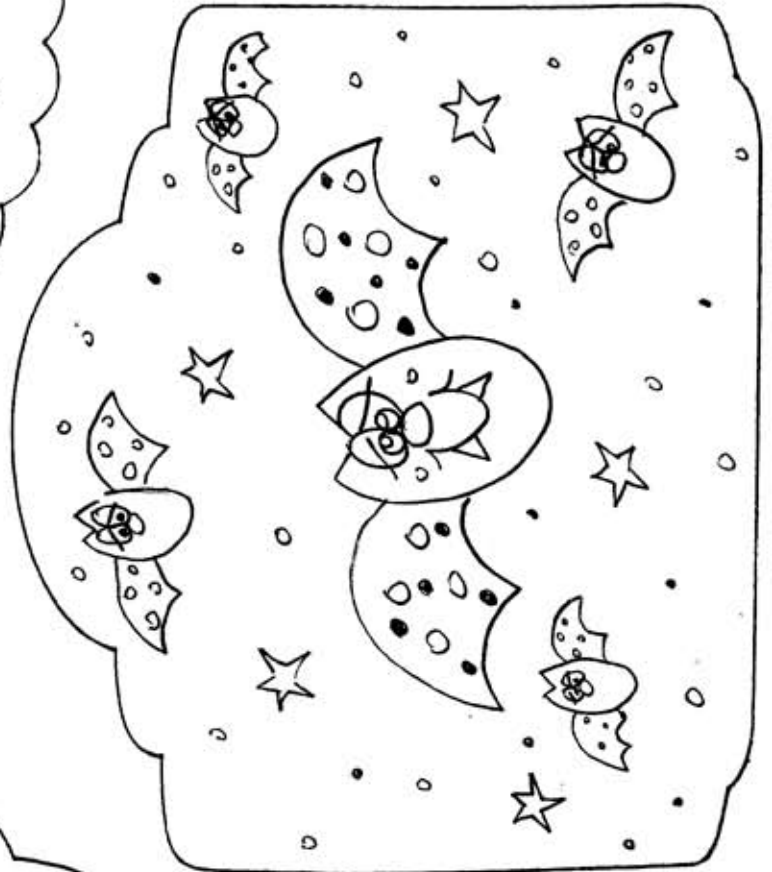
©2020 Laurie Speltz

Lavender. Add the pink details and noses with Wild Berry or Watermelon Slice. Shade the nose with Antique Maroon. Add the white mouth and fangs with Snow White. Highlight around the outside of the shape with Santa Red.

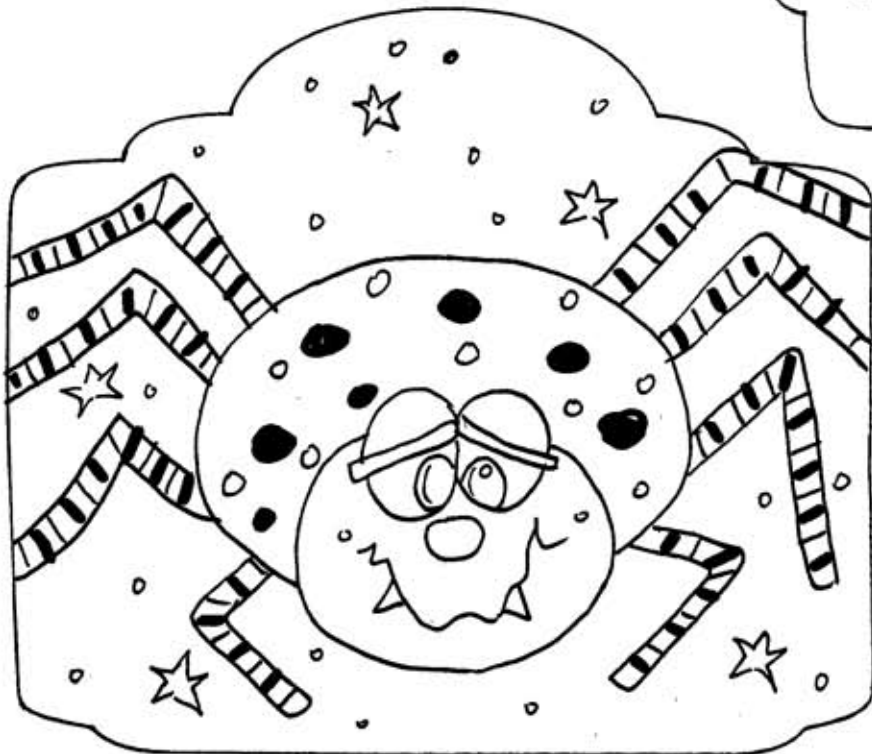
Finish - Add a hanger as desired and hang in a birdcage or display with an easel. You can also use some stands or levels to display your signs in a tiered tray. Spray with matte sealer/finish.



©2020 AURIE SPETZ



©2020 AURIE SPETZ



©2020 AURIE SPETZ